

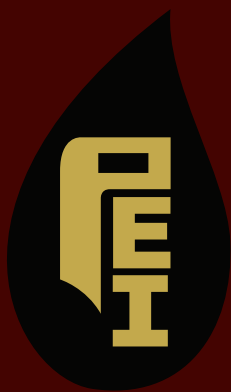
# Hi - Tech Sealant System Industrial Pumps & Valves



## Z-PACK

INJECTABLE SEALANT  
Quick & Easy to Install

- Injectable Sealant
- Lowers Operating Costs
- Reduces Energy Consumption
- Extends Equipment Life
- Reduces/Eliminates Downtime
- Simplifies Inventory:  
One Size Fits All



**PRIMO ENERGY INTERNATIONAL, INC.**

Office: 713.936.2070  
[www.primoenergyintl.com](http://www.primoenergyintl.com)

Distributor

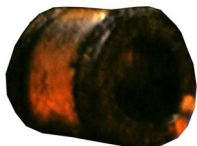
## Unique Properties:

- Combines the latest chemistry & fiber technology
- A malleable, putty consistency makes installation easy
- Conforming to any shape it will seal even worn shafts
- Low coefficient of friction results in lower operating temperatures
- Self-lubricating; needs no flush or cooling water
- Long lasting, will not dry out or harden
- Packaged in durable, compact, easy to use and store containers

## Major Benefits:

- Prevents leakage
- Lowers operating costs
- Reduces maintenance time & costs
- Saves energy
- Reduces shaft and sleeve wear
- Extends equipment life
- Reduces or eliminates downtime

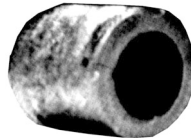
**2000**



**Z-2000:**

A Blend of exfoliated graphite fibers & high temperature sacrificial lubricants for extreme service applications:  
PH RANGE 1-14

**400**



**Z-400:**

A blend of PTFE/Graphite fibers & proprietary chemically resistant lubricant:  
PH RANGE 1-14

**700 AR**



**Z-700AR:**

A Blend of special aramid fiber with molybdenum disulfide & proprietary lubricant for abrasive applications:  
PH RANGE 3-13

**700**



**Z-700:**

A blend of high strength abrasion resistant fibers with non-staining lubricants & special binders:  
PH RANGE 3-13

**500**



**Z-500:**

A food grade blend of pure PTFE fibers with non staining lubricant:  
PH RANGE 1-14

**200**



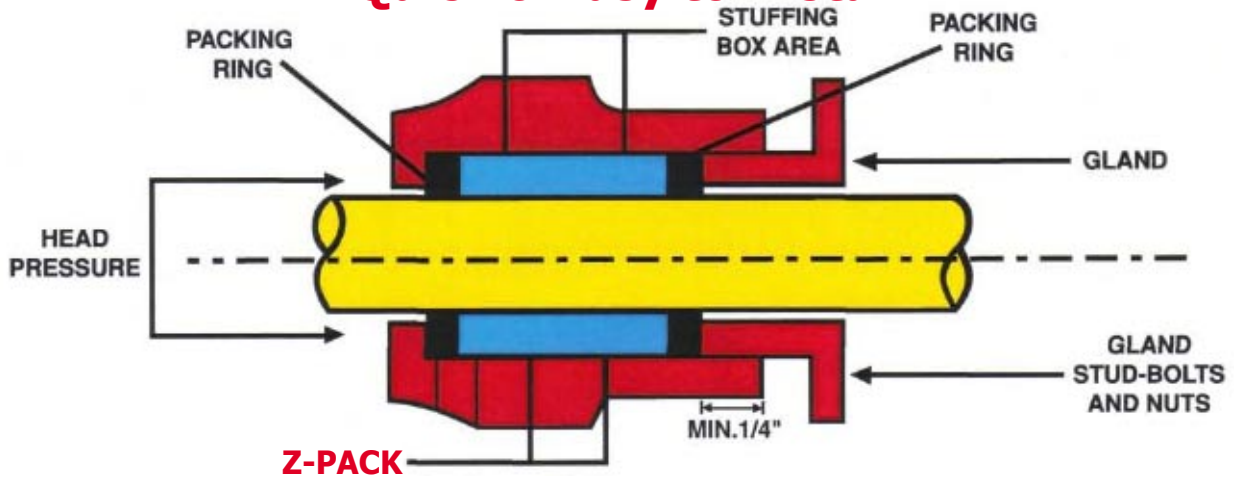
**Z-200:**

A blend of Synthetic fibers, PTFE & non-staining lubricants for general applications:  
PH RANGE 3-12



## Z-PACK INJECTABLE SEALANT

### Quick & Easy to Install



**Z-PACK**  
Initially, Z-PACK SHOULD BE INSTALLED BY HAND

1. Shut off seal water & lubrication inlet
2. Remove old packing & lantern ring
3. Inspect/Clean shaft & gland
4. Install good quality braided packing ring in the bottom of the stuffing box; cut 45\* angle from top to bottom
5. Pack Tightly with Z-PACK
6. Add Z-PACK until just enough space is left to install a braided ring in the top of the stuffing box
7. Install top braided ring  
(Braided ring & Z-PACK fill the stuffing box to within 1/4" of top)
8. Hand Tighten gland bolts
9. Gradually tighten gland bolts, one flat at a time, until leakage stops

***DO NOT OVER TIGHTEN***

Z-200	Z-300	Z-400	Z-500	Z-700	Z-2000
<b>SEALANT SELECTION GUIDE</b>					
<b>Application</b>					
Centrifugal Pumps	Centrifugal Pumps	Centrifugal Pumps	Centrifugal Pumps	Centrifugal Pumps	Centrifugal Pumps
Rotating equipment	Rotating equipment	Rotating equipment	Rotating equipment	Rotating equipment	Rotating equipment
Reciprocating equipment	Reciprocating equipment	Reciprocating equipment	Reciprocating equipment	Reciprocating equipment	Reciprocating equipment
Valves	Valves	Valves	Valves	Valves	Valves
<b>Product Service</b>					
Water	Boiler feed water	Sea water	Foods	Sea water	Chemicals
Sewage	Acids	Brine	Portable water	Brine	Steam
Brine	Caustics	Acids	Pharmaceuticals	Acids	Petroleum fuels
Sea water		Alkalis		Alkalis	Hydrocarbons
Mild Acids		Certain solvents		Other aqueous media	
Caustics					

## An Easy & Convenient Product to Use

**Injectable sealants are easy to install**



**The initial installation of packing materials is done by hand. Tightening the gland nut compresses the material & forces it to conform to any irregular spaces caused by wear. An anti-extrusion ring composed of suitably sized braided packing material is set at the top & bottom of the stuffing box or packing gland to prevent the sealant from being forced out when pressure is applied.**

	Z-200	Z-300	Z-400	Z-500	Z-700	Z-2000
Color	Cream	Black	Black	White	Yellow	Black
Volume Fill in3lb	19.5	10.0	18.0	19.0	31.0	21.5
cc/gm	0.70	0.36	0.65	0.69	1.12	0.78
pH Range	2 - 12	0 - 14	0 - 14	0 - 14	2 - 12	0 - 14
PERFORMANCE FOR CENTRIFUGAL PUMPS & ROTATING EQUIP.						
Shaft Speed fpm	1500	4000	3000	1500	4000	4000
<b>(mps)</b>	7.6	20.3	15.21	7.6	20.3	20.3
Max Temp C*(F*)	204*(400*)	260*(500*)	260*(500*)	260*(500*)	260*(500*)	260*(500*)
Max Pressure psi	150	500	250	150	500	250
Bar	10.3	34.4	17.2	10.3	34.3	17.2
kg/cm2	10.5	35.4	17.7	10.5	35.4	17.7
Anti-extrusion Ring	323/726	323/726	323/726	783L	726/538	110G1/323
PERFORMANCE FOR RECIPROCATING EQUIPMENT OR VALVES						
Rod Speed fpm	150					
Max Temp C*(F*)	204*(400*)	260*(500*)	260*(500*)	260*(500*)	221*(500*)	Stem 649*(1200*) 454*(850*) Ox
Max Pressure psi	1200	3000	3000	1200	3000,10000***	3000
Bar	82.6	206.8	206.8	82.6	206.8,690***	206.8
Max Temp C*(F*)	204*(400*)	260*(500*)	260*(500*)	260*(500*)	260*(500*)	260*(500*)
Max Pressure psi	150	500	250	150	500	250
Bar	82.6	206.8	206.8	82.6	206.8,690***	206.8



**PRIMO ENERGY INTERNATIONAL, INC.**

Office: 713.936.2070

[www.primoenergyintl.com](http://www.primoenergyintl.com)

Distributor